

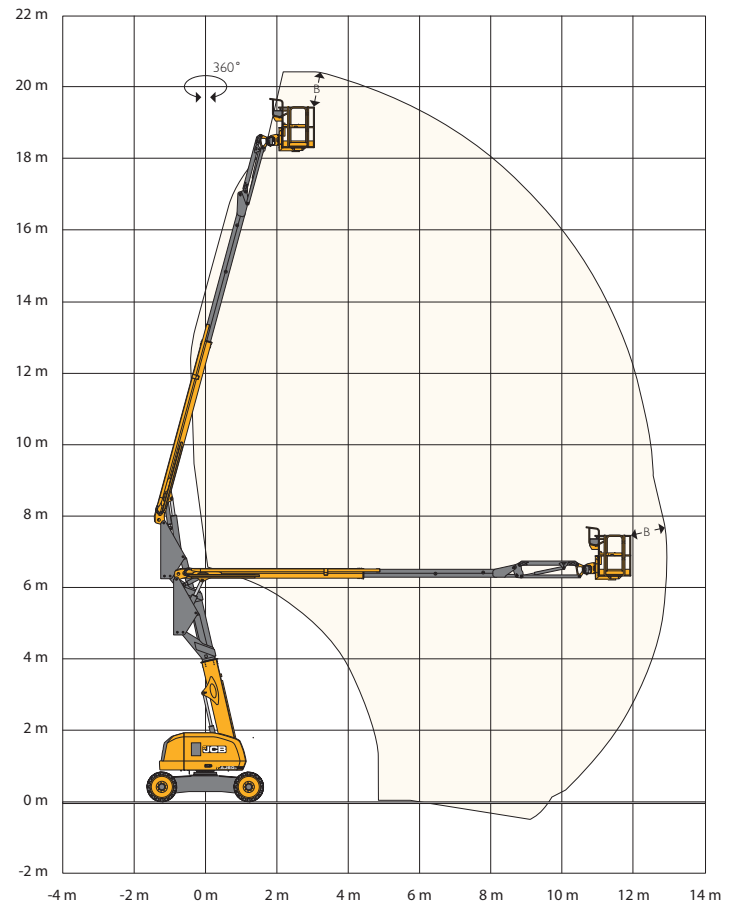
ARTICULATED BOOM AJ60D



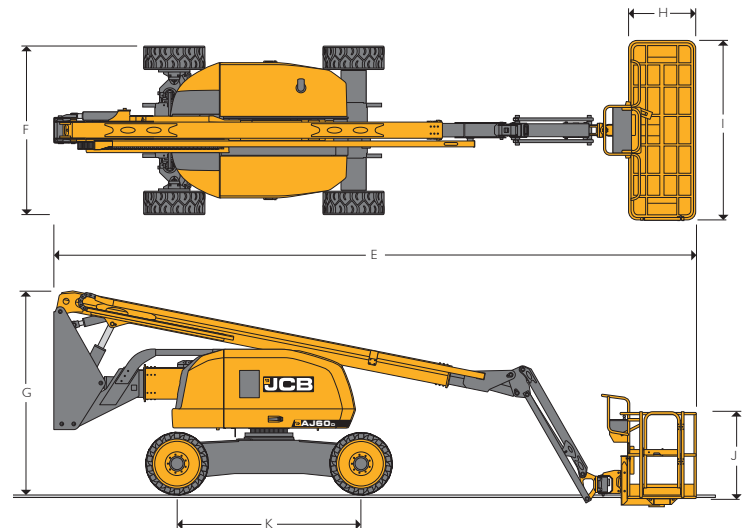
MACHINE SPECIFICATIONS

REACH PERFORMANCE		METRIC	IMPERIAL
A	Max. Platform Height	m / ft ins	18.3 / 60' 0"
B	Max. Working Height	m / ft ins	20.3 / 66' 0"
C	Max. Outreach	m / ft ins	11.9 / 39' 1"
D	Max. Up & Over Height	m / ft ins	7.8 / 25' 7"
DIMENSIONS			
E	Length - Stowed	m / ft ins	8.60 / 28' 3"
F	Width - Stowed	m / ft ins	2.28 / 7' 6"
G	Height - Stowed	m / ft ins	2.56 / 8' 5"
H	Platform Length	m / ft ins	0.91 / 3' 0"
I	Platform Width	m / ft ins	2.44 / 8' 0"
J	Platform Height	m / ft ins	1.10 / 3' 7"
K	Wheelbase	m / ft ins	2.44 / 8' 0"
L	Weight ¹	kg / lbs	10,800 / 23,814
M	Tail Swing	m / ins	0.15 / 5.9
N	Ground Clearance	m / ins	0.23 / 9.0
PERFORMANCE			
O	Platform Occupants		2
P	Platform Capacity	kg / lbs	250 / 551
Q	Platform Rotation	°	160
R	Machine Rotation	°	360 Continuous
S	Drive & Steer Mode		4WD, 2WS
T	Max. Driving Speed (Stowed)	km/h / mph	5.0 / 3.1
U	Max. Driving Speed (Raised)	km/h / mph	1.1 / 0.7
V	Gradeability	%	40
W	Max. Allowable Slope	°	5
X	Tyre Type		Solid
Y	Tyre Size		33x12-20
Z	Turning Radius (Inside)	m / ft ins	3.5 / 11' 6"
AA	Turning Radius (Outside)	m / ft ins	6.3 / 20' 8"
AB	Voltage	v	12
ENGINE			
AC	Make		JCB by Kohler
AD	Emissions Level		Stage IIIa
AE	Model		KDI 1903 TCR
AF	Power	kW / hp	36 / 48
AG	Rated Speed	RPM	2,600
AH	Turbo		Yes
AI	Intercooler		Yes
AJ	Fuel Tank Capacity	L / US gal	110 / 29

WORK ENVELOPE



DIMENSIONS



NOTES

¹Machine weight may vary with regional requirements and specific options.